

ISTA 6 - Amazon.com – SIOC - A Test Report_External

VERSION DATE: 4/24/17

ITEM INFORMATION

Vendor/Seller Name: AmazonBasics

ASIN: B00BXBGG76

Item: AmazonBasics 60 Watt Equivalent, Soft White, Dimmable, A19 LED Light Bulb - 6 Pack

Certification Passed:

- Pass / Frustration Free Packaging (FFP)
- Pass / Ships in Own Container (SIOC)
- Fail / Enforced Over Box (EOB)

LAB INFORMATION

Testing Lab: Amazon Packaging Lab

Location: Seattle, Washington

Date of Test: 3/12/2018

ISTA Member/ Lab Tech: Alex Dinsmore

TEST RESULTS

Tested Item Summary		
Number of Samples Tested	Number of Samples Passed	Number of Samples Failed
1	1	

Post Test Comments:

Overview	ASIN- B00BXBGG76 passed ISTA6-AMAZON.COM-SIOC Type A and is approved as FFP. It passed as FFP because all the material in the packaged was all recyclable and was easy to open.
Product Condition	All six of the lightbulbs had no scuffing or damaged and turned on when plugged in.
Packaging Condition	The packaging was in good condition it had minor scuffing and also dents but was in good condition. The inserts in the container were in new condition with very little damage if any at all.

LAB TEST REQUEST {filled out by requestor}

Test Requestor	AmazonBasics
Project Name	AmazonBasics Light Bulbs
Submission Date	3/12/2018
Due Date	3/15/2018

ASIN	Manufacturer	Description
B00BXBGG76	AmazonBasics	AmazonBasics 60 Watt Equivalent, Soft White, Dimmable, A19 LED Light Bulb - 6 Pack

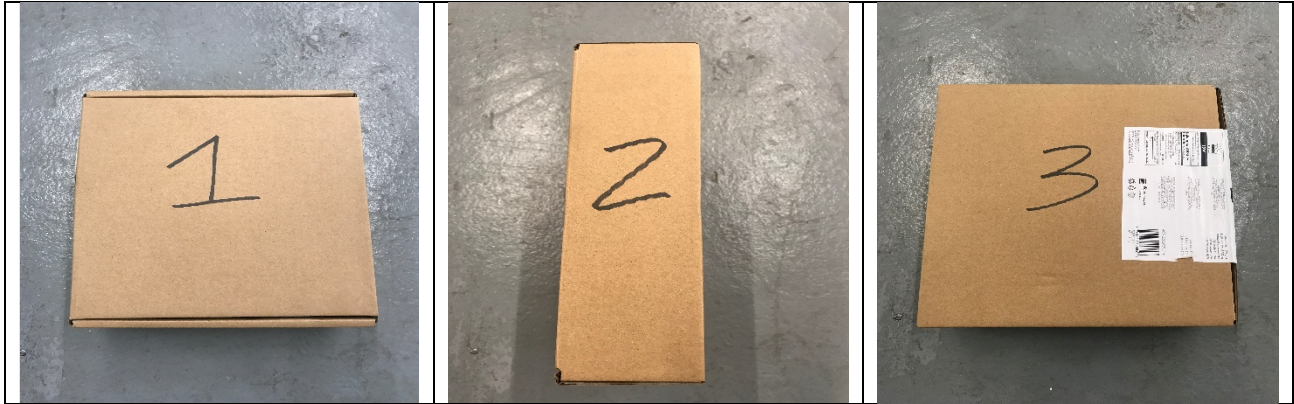
Package Dimension	Catalog Dims and girth 9.8 x 8.9 x 2.9 inches/ Actual dims and girth measured by lab 9.75 x 9 x 3 inches, Girth 33.75 inches
Package Weight	Catalog Weight 1.09 pounds / Actual weight by lab 1.00 pounds
Classification 1	FFP
Classification 2	Parcel
Test Type	ISTA 6 –Amazon.com SIOC - A
Fragile/Non-Fragile	Non-Fragile
Value Add Packaging (VAP)	No
Value Add Packaging (VAP) Info	Material specifications: Corrugated
Total Test Samples	1 unit
Additional Notes	N/A

PRE-TEST INSPECTION {filled out by lab}

Product Condition	Package was not opened before testing to review product.
Package Condition	Package was in new condition before testing.
Package Condition before testing	<input checked="" type="checkbox"/> ORIGINAL as arrived in the lab for testing <input type="checkbox"/> NEW re-packaged with new materials before testing
Corrugated Info (Box Cert if available)	E-Flute Corrugated
Dunnage Info	N/A
Additional Notes	N/A

PRE-TEST PICTURES

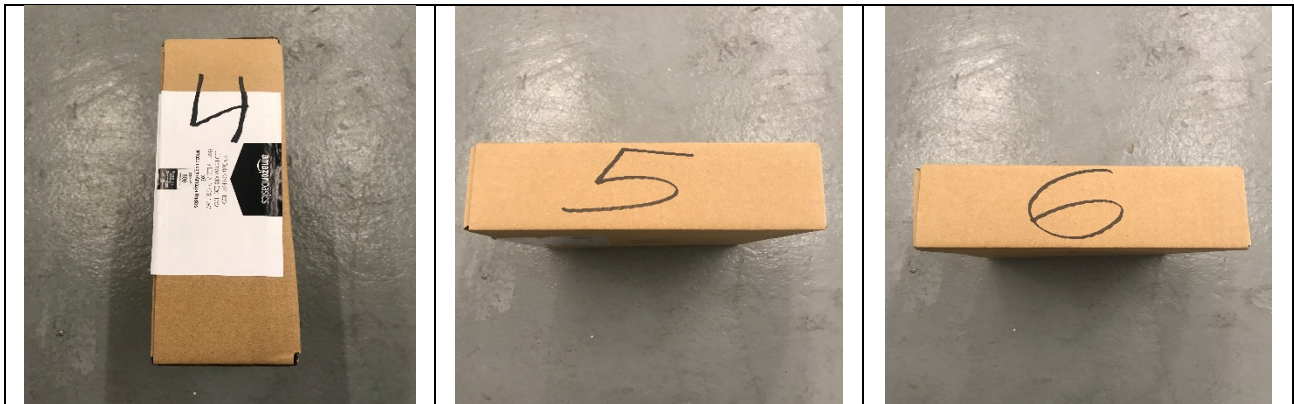
Six sides of the ASIN package should be numbered and photographed. If a box cert is present it should be taken and recorded. Isometric picture views should be taken as called out below. Pictures of special call outs and or damage should have description of location and detailed information in the text box below the picture.



Side 1

Side 2

Side 3



Side 4

Side 5

Side 6



Box Cert (If Applicable)

ISO #1 Side 1/2/5

ISO #2 Sides 3/4/6

TEST DETAIL

Items in black were completed and values updated. Items left in gray were not completed.

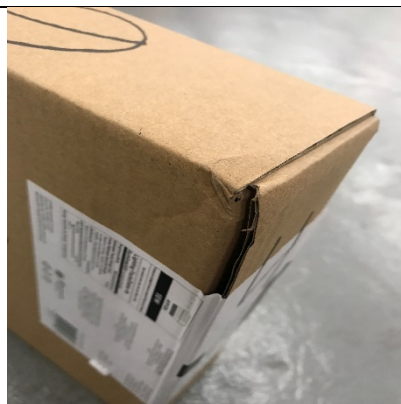
Test	Value	P/F	P/F	P/F	P/F	P/F	OBSERVATIONS
BLOCK 1:Temp and Humidity							Ambient Lab Temp 12+ hours
BLOCK 2: Drop 1-7	18 INCHES	P	NA	NA	NA	NA	
BLOCK 2: Drop 8	36 INCHES	P	NA	NA	NA	NA	Face 3
BLOCK 2: Drop 9	18 INCHES	P	NA	NA	NA	NA	Face 3
BLOCK 12: Vib with Top Load Face 3	35 Lbs.	P	NA	NA	NA	NA	
BLOCK 12: Vib with Top Load Face 4	0 Lbs.	P	NA	NA	NA	NA	
BLOCK 12: Vib with Top Load Face 6	0 Lbs.	P	NA	NA	NA	NA	
BLOCK 12: Vib Face 3 (Pick-Up Truck)	0 Lbs.	P	NA	NA	NA	NA	
BLOCK 15: Drop 10-15	18 INCHES	P	NA	NA	NA	NA	
BLOCK 15: Drop 16	36 INCHES	P	NA	NA	NA	NA	Face Dropped 6
BLOCK 15: Drop 17	18 INCHES	P	NA	NA	NA	NA	Hazard Drop
BLOCK 21: Rotational Edge Drop	Pass/fail	NA	NA	NA	NA	NA	Not applicable for this package
BLOCK 22: Full Rotational Flat Drop	Pass/fail	NA	NA	NA	NA	NA	Not applicable for this package
BLOCK 23: Bridge Impact	Pass/fail	NA	NA	NA	NA	NA	Not applicable for this package
BLOCK 24: Concentrated Edge Impact	Pass/fail	NA	NA	NA	NA	NA	Not applicable for this package
BLOCK 25: Leak Test	Pass/fail	NA	NA	NA	NA	NA	Not applicable for this package

TEST PICTURES

Pictures should be taken of each block test set up along with a post picture taken of the item at the end of each test block. Additional pictures of damage should have locations noted, size of damages measured, and written in text box below them.



Block 2 Test Set Up



3,4,6 Corner



2,3,5 Corner

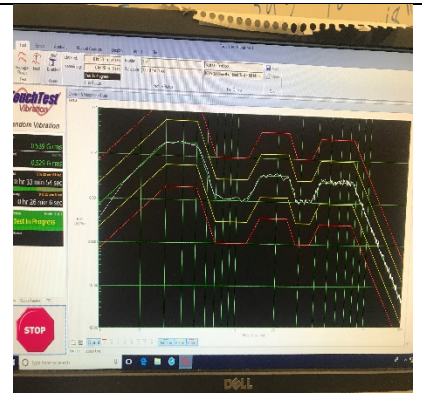
TEST PICTURES {continued}



Block 12 Face 3 Test Set up



Block 12 Face 3 Post Test Item Picture



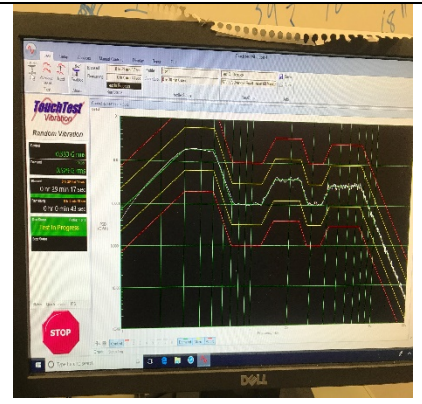
Block 12 Face 3 Test Vibration Profile



Block 12 Face 4 Test Set up



Block 12 Face 4 Post Test Item Picture



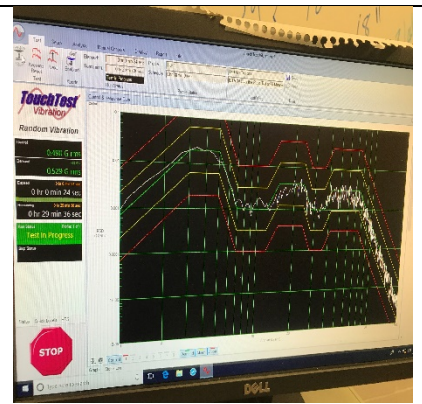
Block 12 Face 4 Test Vibration Profile



Block 12 Face 6 Test Set up



Block 12 Face 6 Post Test Item Picture



Block 12 Face 6 Test Vibration Profile

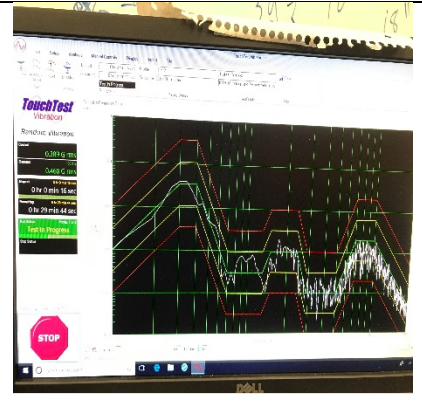
TEST PICTURES {continued}



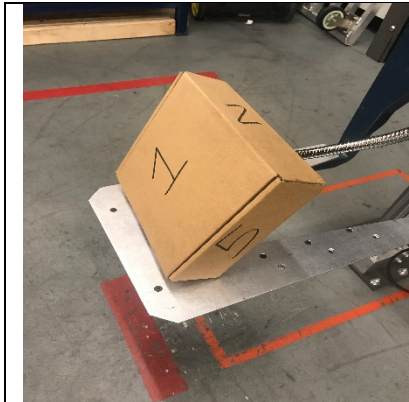
Block 12 Face 3 (Pick-Up) Test Set up



Block 12 Face 3 Post Test Item Picture



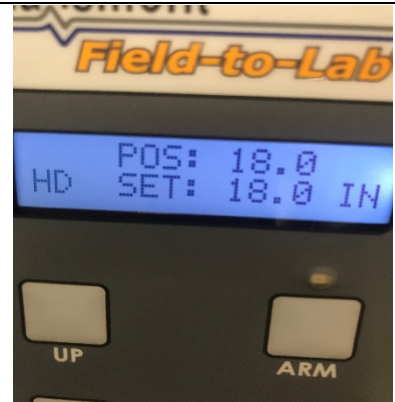
Block 12 Face 3 Test Vibration Profile



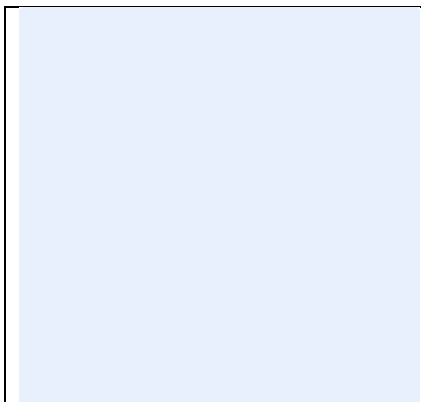
Block 15 Test Set Up



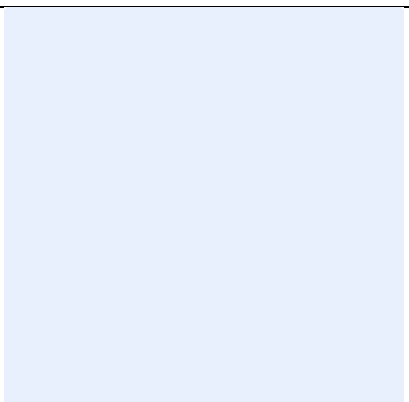
Block 15 Post Test Item Picture



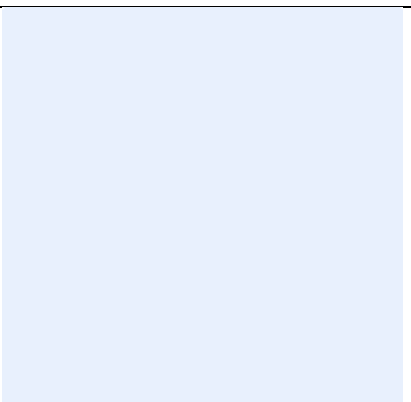
Drop Height 18 Inches



Block 21 Test Set Up



Block 21 Post Test Item Picture



Extra #

TEST PICTURES {continued}

Block 22 Test Set Up	Block 22 Post Test Item Picture	Extra #

Block 23 Test Set Up	Block 23 Post Test Item Picture	Extra #

Block 24 Test Set Up	Block 24 Post Test Item Picture	Extra #




TEST PICTURES {continued}

Block 25 Test Set Up	Block 25 Post Test Item Picture	Extra #




POST TEST PICTURES


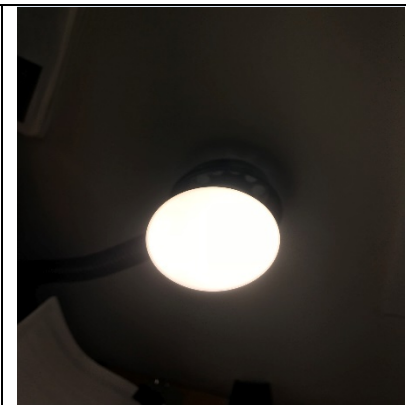
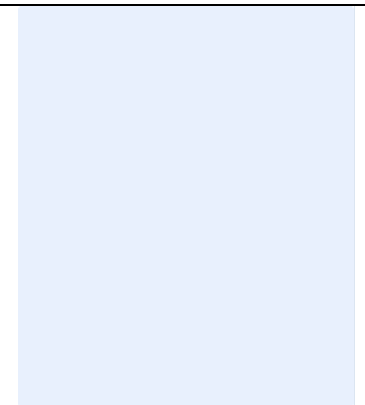
Isometric views of the box should be taken as called out in first two picture spots. An exploded BOM view should be added to the third slot. Additional pictures of damage should have locations noted, size of damages measured, and written in text box below them.

		
ISO #1 Side 1/2/5	ISO #2 Sides 3/4/6	Exploded BOM View

		
Opening the container	Top insert without instructions	Container without the top insert

POST TEST PICTURES {continued}

		
<p>Lightbulbs out of the corrugated container</p>	<p>No nipple damage to any of the 6 lightbulbs</p>	<p>No nipple damage to any of the 6 lightbulbs</p>

		
<p>All 6 lightbulbs turned on and worked</p>	<p>All 6 lightbulbs turned on and worked</p>	<p>Extra #</p>

END OF REPORT